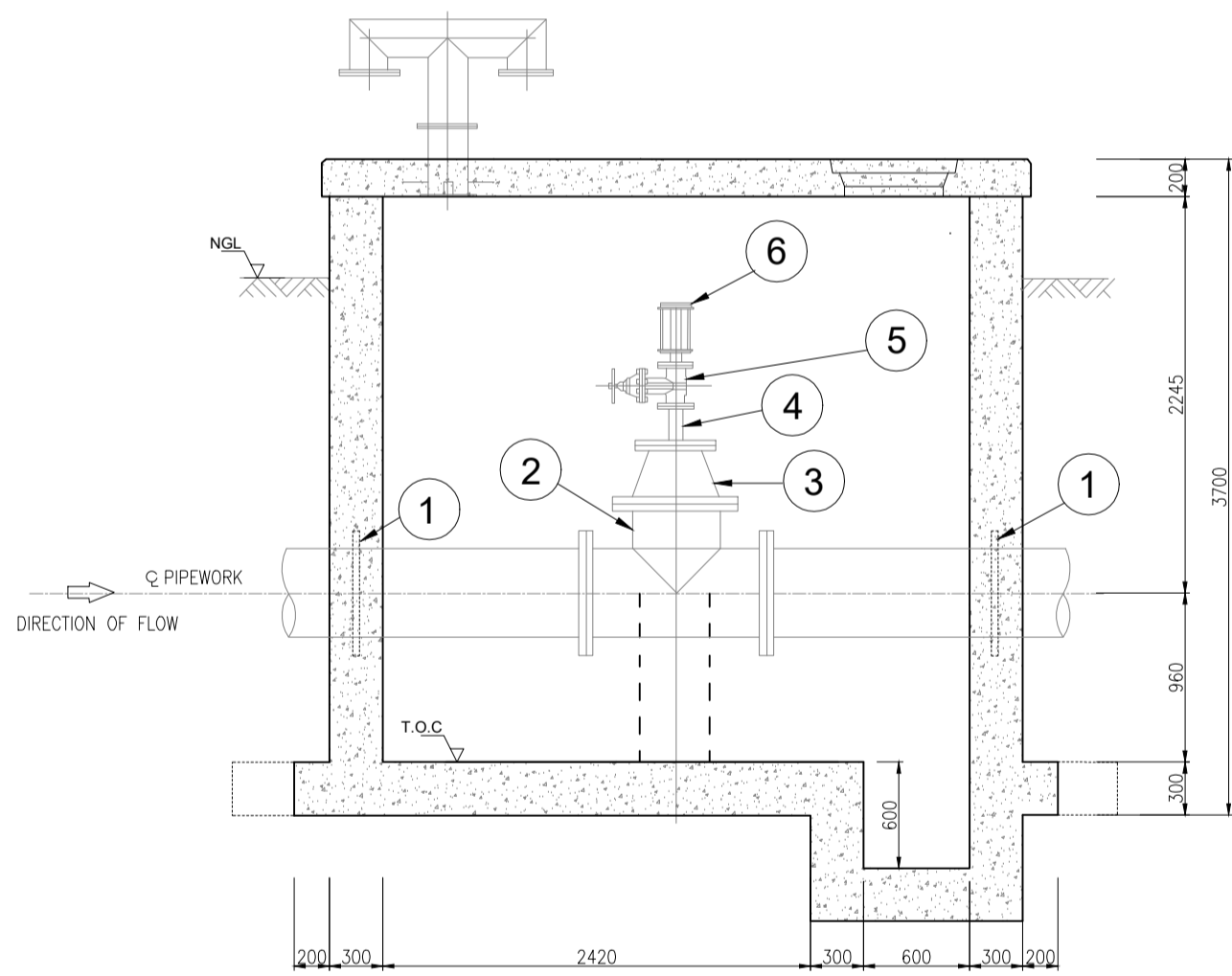


PLAN VIEW  
SCALE 1:25



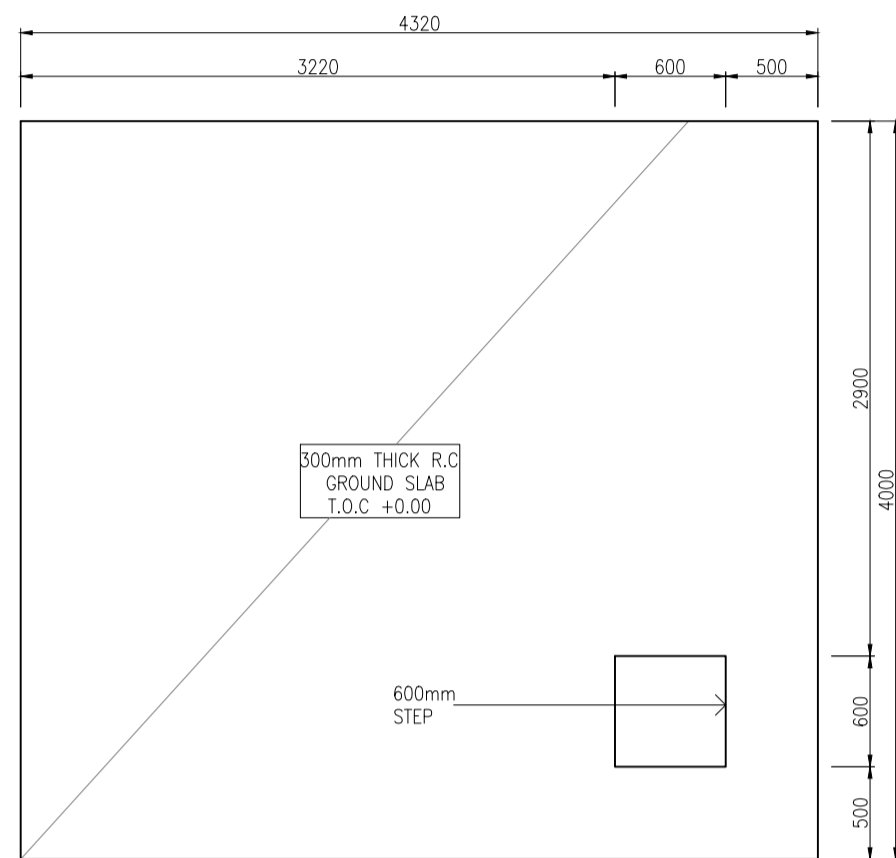
SECTION A-A  
SCALE 1:25

AIR VALVE ASSEMBLY - FITTINGS LIST			
ITEM No.	DESCRIPTION	QUANTITY	SKETCH
1	PUDDLE FLANGE, DIMENSIONS TO SANS 1123-1600/3, WITH HOLE BORED OUT TO SUIT ANY PIPE DIAMETER	2	
2	FLANGED EQUAL TEE, FLANGES DRILLED TO SANS 1123-1600/3	1	
3	FLANGED REDUCER, FLANGE DRILLED TO SANS 1123-1600/3	1	
4	FLANGED RISER PIECE, ONE END FLANGED TO SUIT AIR VALVE, OTHER END FLANGED TO SUIT 300NB END OF REDUCER, FLANGES DRILLED TO SANS 1123-1600/3	1	
5	80NB FLANGED, PN 16, VOSA TYPE, D SERIES WEDGE GATE VALVE HANDWHEEL, ANTI CLOCKWISE CLOSING TO SANS 864, DRILLED TO SANS 1123-1600/3 (TO JOHANNESBURG WATER SPECIFICATIONS)	1	
6	VENT-O-MAT AIR VALVE	1	

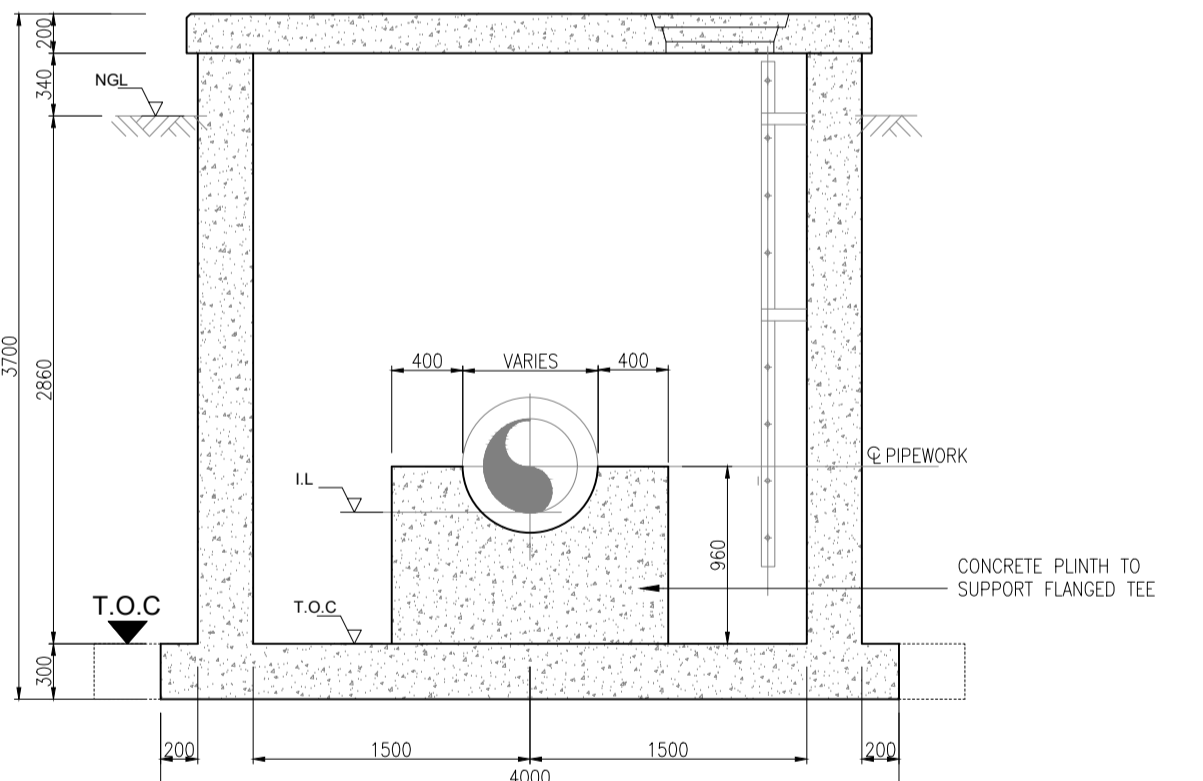
NB: QUALITY OF FITTINGS SHOWN IN THE ABOVE TABLE IS FOR ONE CHAMBER ONLY

#### PIPING

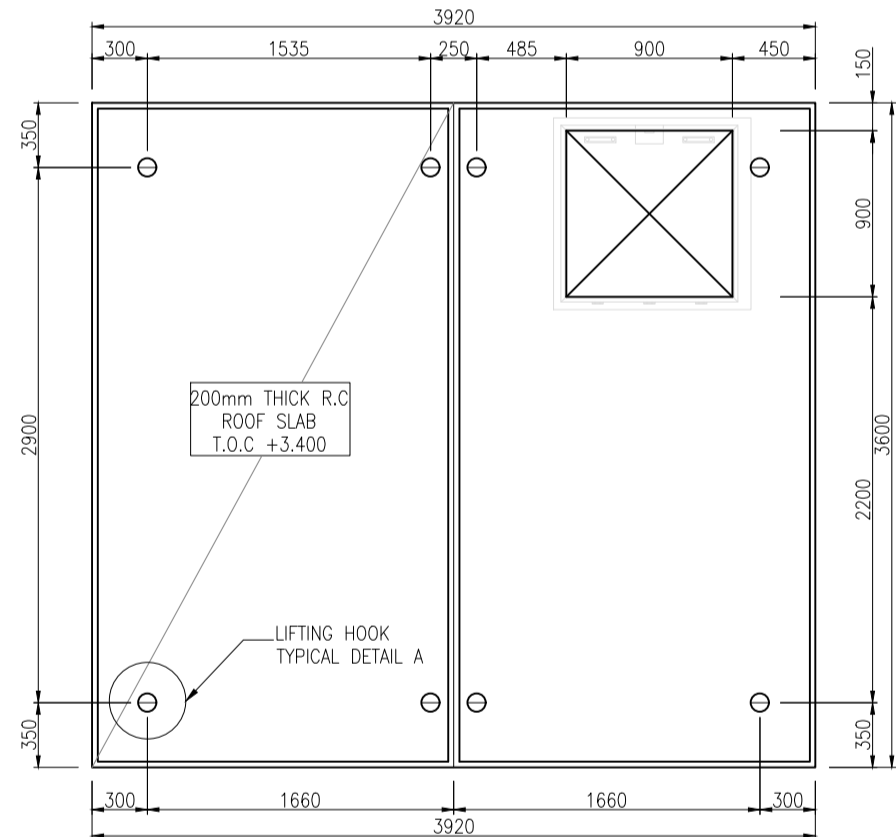
1. PIPING TO BE SANS 62 HEAVY UP TO & INCLUDING 150NB & SANS 719 GRADE B, FOR 200 NB AND ABOVE
2. ALL FLANGES TO BE TO SANS 1123-1600/3-DIMENSIONS TO FLAT FACE.
3. FLANGES TO BE FITTED WITH HOLES OFF CENTER (i.e 2 HOLES TOP)
4. ALL FLANGES TO BE FLAT FACED SLIP-ON TYPE
5. ALL GASKETS TO BE FULL FACE 3.0mm THICK EPDM INSERTION RUBBER GASKETS, OR SIMILAR APPROVED.
6. BUTT WELDED PIPE FITTINGS TO COMPLY WITH ASTM A234 GRADE WPB, SIZES TO ANSI B16.9
7. SCREWED PIPES & FITTINGS: (40 NB AND SMALLER)
  - a) SCREWED TO B.S. 21
  - b) WROUGHT STEEL FITTINGS TO B.S. 1740
  - c) MALLEABLE CAST IRON PIPE FITTINGS TO SANS 509
8. ALL CLOSER PIPES TO BE SUPPLIED 100mm LONGER THAN DRAWING DIMENSION (i.e AS PER MATERIAL LIST DIMENSION) & WITH LOOSE FLANGE TO ALLOW FOR SITE ADJUSTMENT.
9. LOOSE FLANGES ARE MARKED THUS
10. FABRICATOR TO SUPPLY ALL NUTS, BOLTS, & WASHERS, SUITABLY BAGGED (INCL. 5% SPARES) LABELLED & DISPATCHED TO SITE TOGETHER WITH PIPING. ALL FASTENERS TO BE HOT DIP GALVANIZED.
11. ALL FLUSHING POINTS TO BE FITTED WITH 25NB NIPPL, 25NB BALL VALVE (C.I.) AND 25NB QUICK RELEASE COUPLING
12. ALL FABRICATED STEELWORK (I.E VENTILATORS, CAT LADDERS, ETC) TO BE GALVANIZED TO SANS 763 THICKNESS OF ZINC COAT TO BE 85um (610gm)



GROUND FLOOR SLAB  
SCALE 1:25



SECTION B-B  
SCALE 1:25



CHAMBER ROOF SLAB  
SCALE 1:25

### DETAILS OF AIR VALVE CHAMBER - FITTINGS

SCALE 1:25